

State of Wyoming Corner Record

(In compliance with the CORNER PERPETUATION AND FILING ACT, Wyoming Statutes, 1997, Section 33-29-140 et. seq., and the Rules and Regulations of the Board of Registration for Professional Engineers and Professional Land Surveyors)

Reverse side of this form may be used if more space is needed.

Record of original survey and citation of source of historical information (if corner is lost or obliterated). Description of corner monumentation evidence found and/or monument and accessories established to perpetuate the location of this corner. Sketch of relative location of monument, accessories, and reference points with course and distance to adjacent corner(s) (if determined in this survey). Method and rationale for reestablishment of lost or obliterated corner.



RECORDED 5/24/2005 AT 1:48 PM REC# 417612 JK# 1882 PG# 1245
DEBRA K. LATHROP, CLERK OF LARAMIE COUNTY, WY PAGE 1 OF 1

RECORD: RED SANDSTONE 13x10x4

MONUMENT FOUND: NOTHING FOUND

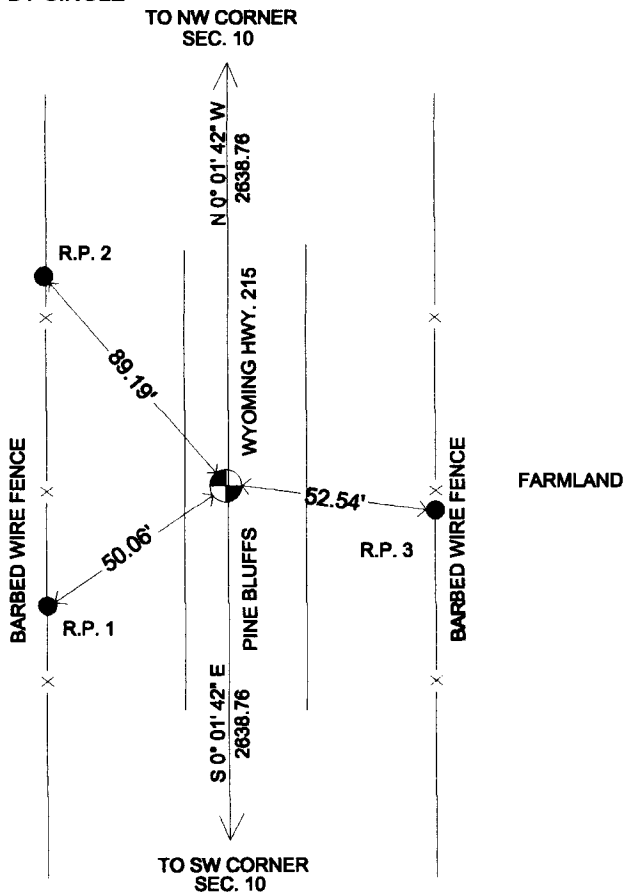
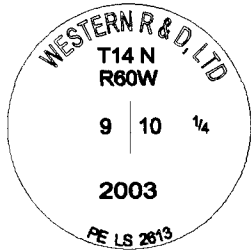
MONUMENT SET: SET 2 1/2" ALUMINUM
CAP ON 24" X 5/8" REBAR,
FLUSH WITH PAVEMENT.

REFERENCES: SET 24" X 5/8" REBAR (3) FOR
REFERENCE.

NOTE: THIS CORNER WAS RESET BY SINGLE
PROPORTION.



FARMLAND
GENTLY ROLLING HILLS



Date of Field Work: MARCH 2003 Office Reference: T14NR60W-400500

CROSS INDEX DIAGRAM

1	2	3	4	5	6	7	8	9	10	11	12	13	14	15	16	17	18	19	20	21	22	23	24	25		
A																									A	
B																									B	
C		6		5		4		3		2		1													C	
D																									D	
E																									E	
F																									F	
G		7		8		9		10		11		12													G	
H																									H	
J																									J	
K																									K	
L		18		17		16		15		14		13													L	
M																									M	
N																									N	
O																									O	
P		19		20		21		22		23		24													P	
Q																									Q	
R																									R	
S																									S	
T		30		29		28		27		26		25													T	
U																									U	
V																									V	
W																									W	
X		31		32		33		34		35		36													X	
Y																										Y
Z	1	2	3	4	5	6	7	8	9	10	11	12	13	14	15	16	17	18	19	20	21	22	23	24	25	Z

Firm/Agency, Address

Roger H. Krum, PE & PLS2613
Western R & D, Ltd.
5908 Yellowstone Rd Suite B
Cheyenne, Wyoming 82001

Telephone Number: 307 632 5656

This corner record was prepared
by me or under my direction
and supervision.
SEAL & SIGNATURE



Corner Name: 1/4 CORNER SECTION 9-10

Section: 9-10 T 14 N R 60 W ; 6th P.M. Cross-Index No.: 9-13